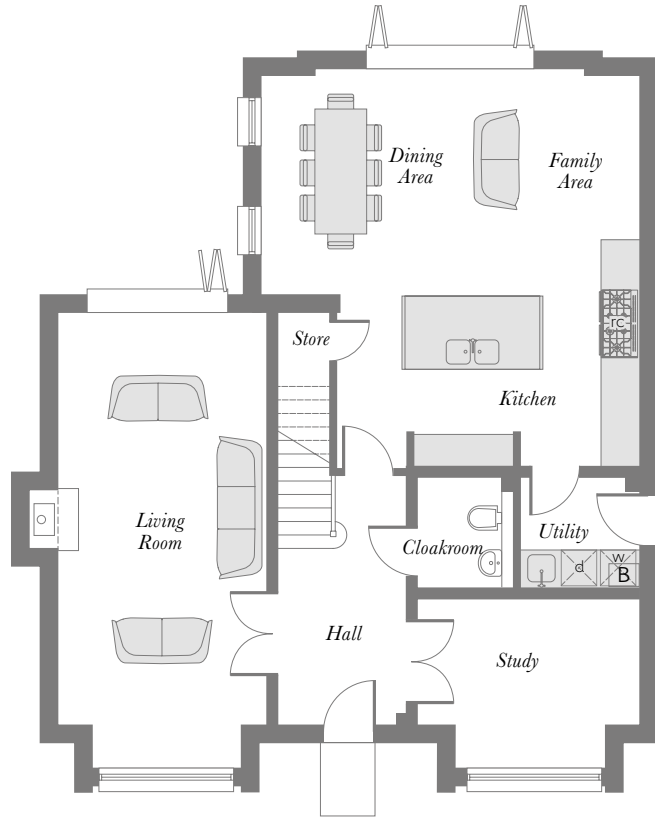


HEATHERLEY  
WOOD  
*at Alderley Park*

*The Fielding four bedroom home*

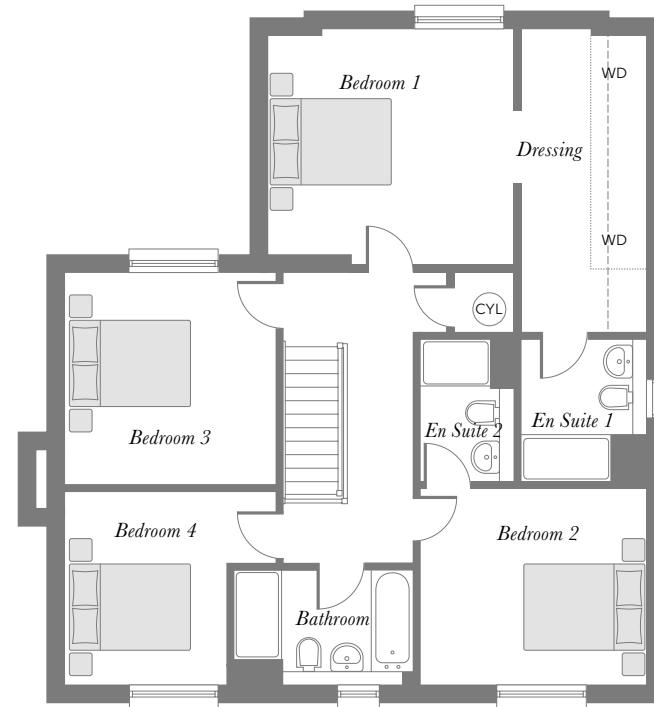


# The Fielding four bedroom home



## Ground Floor

Kitchen/Family/Dining Area	6.585m <small>(max)</small>	x	6.208m <small>(max)</small>	21'7" <small>(max)</small>	x	20'4" <small>(max)</small>
Living Room	6.760m <small>(excl. Bay)</small>	x	3.450m	22'2" <small>(excl. Bay)</small>	x	11'3"
Utility	1.965m	x	1.825m	6'5"	x	5'11"
Study	3.673m	x	2.100m	12'0"	x	6'10"
Cloakroom	1.825m	x	1.615m	5'11"	x	5'3"



## First Floor

Bedroom 1	4.019m	x	3.900m <small>(min)</small>	13'2"	x	12'9" <small>(min)</small>
En Suite 1	2.370m	x	2.100m	7'9"	x	6'10"
Dressing	4.908m <small>(min)</small>	x	2.100m <small>(min)</small>	16'1" <small>(min)</small>	x	6'10" <small>(min)</small>
Bedroom 2	3.735m	x	3.234m	12'3"	x	10'7"
En Suite 2	2.370m <small>(min)</small>	x	1.542m <small>(min)</small>	7'9" <small>(min)</small>	x	5'0" <small>(min)</small>
Bedroom 3	3.485m	x	3.482m	11'5"	x	11'5"
Bedroom 4	3.182m	x	2.682m <small>(min)</small>	10'5" <small>(min)</small>	x	8'9" <small>(min)</small>
Bathroom	2.170m <small>(min)</small>	x	2.020m <small>(min)</small>	7'1" <small>(min)</small>	x	6'7" <small>(min)</small>

B Boiler  
 CYL Hot Water Cylinder  
 rc Range Cooker  
 WD Wardrobe  
 d Dryer  
 w Washer  
 --- Reduced Head Height  
 □ Log Burner

Some items shown in this key may be subject to change, and positions could vary from those indicated on this floorplan. Please refer to Sales Advisor for details of your selected plot. Computer generated image shown overleaf. External finishes, landscaping and configuration may vary from plot to plot. Please refer to Sales Advisor for further details. All dimensions are approximate and should not be used for carpet sizes, appliance spaces, or furniture. Furniture not to scale and all positions are indicative. We operate a policy of continuous improvement and individual features such as kitchen and bathroom layouts, doors, windows, garages and elevational treatments may vary from time to time. Consequently these particulars should be treated as general guidance only and do not constitute a contract, part of a contract or a warranty. 185773/02/19. The Fielding, Laura Ashley kitchen sizes of range varies, see kitchen plan for more information.