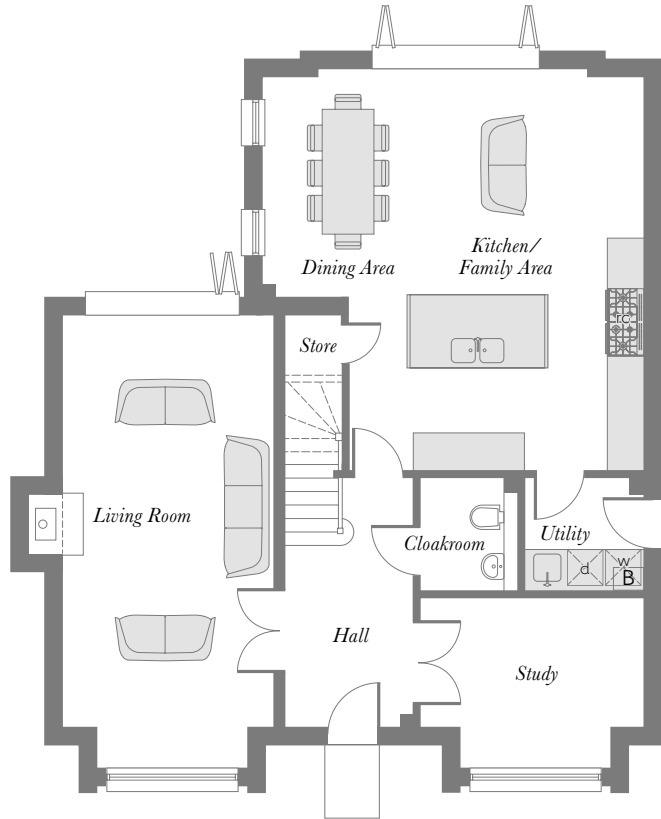


HEATHERLEY
WOOD
at Alderley Park

The Fielding Plus six bedroom home

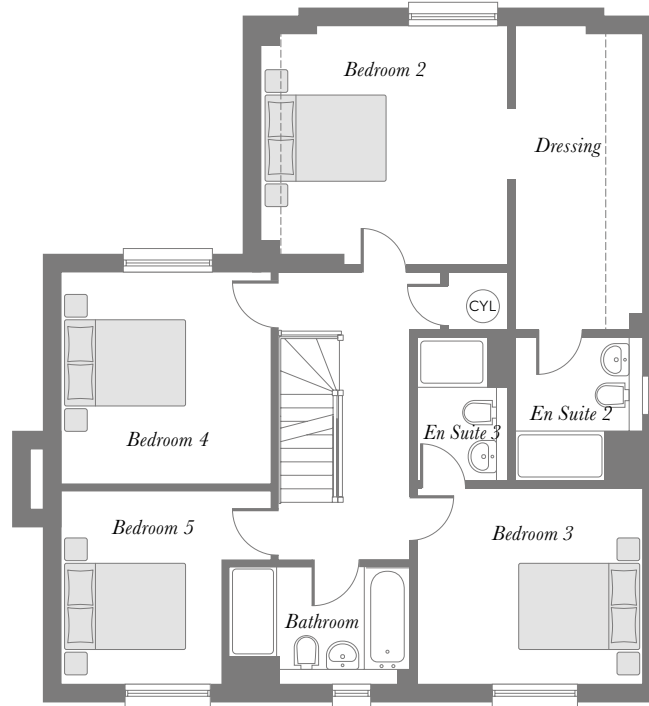


The Fielding Plus six bedroom home



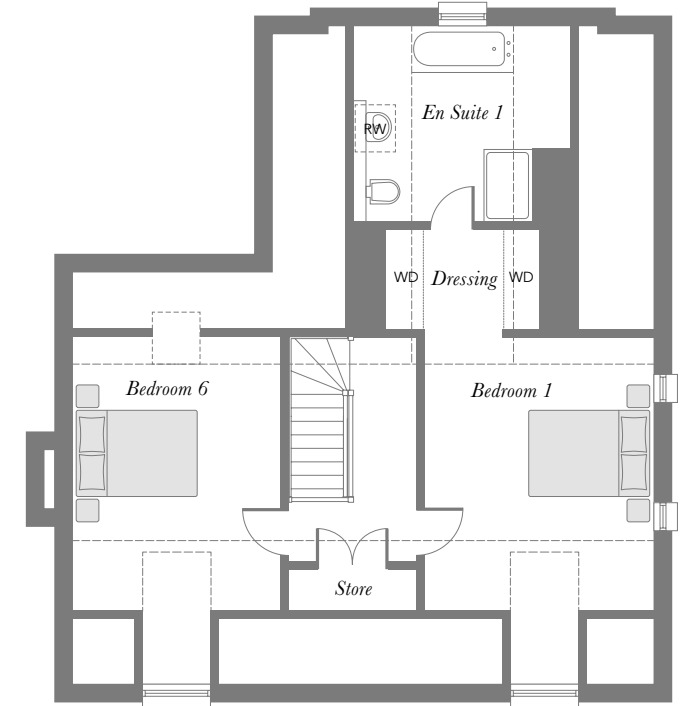
Ground Floor

Kitchen/Family/ Dining Area	6.585m x 6.208m <small>(max) (max)</small>	21'7" x 20'4" <small>(max) (max)</small>
Living Room	6.760m x 3.450m <small>(excl. Bay)</small>	22'2" x 11'3" <small>(excl. Bay)</small>
Utility	1.965m x 1.825m	6'5" x 5'11"
Cloakroom	1.825m x 1.615m	5'11" x 5'3"



First Floor

Bedroom 2	4.019m x 3.900m <small>(max) (max)</small>	13'2" x 12'10" <small>(max) (max)</small>
Dressing Area	4.908m x 2.100m	16'1" x 6'10"
En Suite	2.370m x 2.100m	7'9" x 6'10"
Bedroom 3	3.735m x 3.234m	12'3" x 10'7"
En Suite 3	2.370m x 1.542m <small>(max) (max)</small>	7'9" x 5'0" <small>(max) (max)</small>
Bedroom 4	3.485m x 3.482m <small>(min)</small>	11'5" x 11'5" <small>(min)</small>
Bedroom 5	3.182m x 2.682m <small>(min)</small>	10'5" x 8'9" <small>(min)</small>
Bathroom	2.170m x 2.020m <small>(min)</small>	7'1" x 6'7" <small>(min)</small>



Second Floor

Bedroom 1	4.540m x 3.754m <small>(excl. Dorm)</small>	14'10" x 12'3" <small>(excl. Dorm)</small>
Dressing Area	2.550m x 1.790m	8'4" x 5'10"
En Suite 1	3.608m x 3.212m <small>(max) (max)</small>	11'10" x 10'6" <small>(max) (max)</small>
Bedroom 6	4.540m x 3.507m	14'10" x 11'6"

B Boiler
 CYL Hot Water Cylinder
 RW Roof Window
 WD Wardrobe
 rc Range Cooker
 d Dryer
 w Washer
 --- Reduced Head Height
 o Log Burner

Some items shown in this key may be subject to change, and positions could vary from those indicated on this floorplan. Please refer to Sales Advisor for details of your selected plot. Computer generated image shown overleaf. External finishes, landscaping and configuration may vary from plot to plot. Please refer to Sales Advisor for further details. All dimensions are approximate and should not be used for carpet sizes, appliance spaces, or furniture. Furniture not to scale and all positions are indicative. We operate a policy of continuous improvement and individual features such as kitchen and bathroom layouts, doors, windows, garages and elevational treatments may vary from time to time. Consequently these particulars should be treated as general guidance only and do not constitute a contract, part of a contract or a warranty. 185773/02/19. The Fielding Plus. Laura Ashley kitchen sizes of range varies, see kitchen plan for more information.