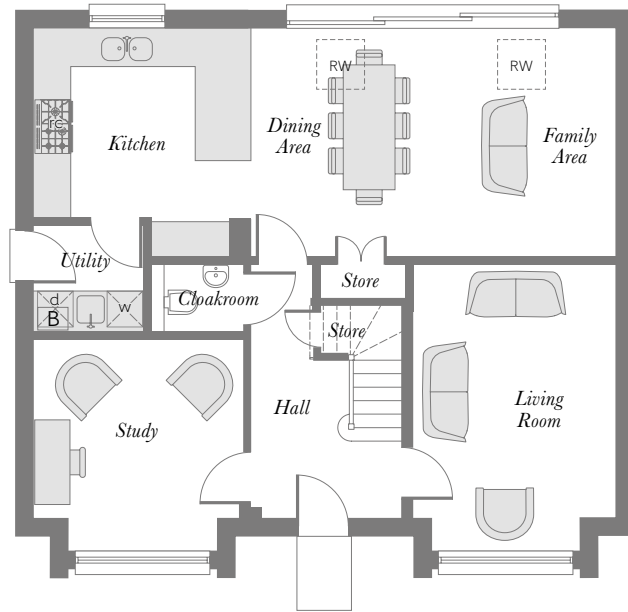


HEATHERLEY  
WOOD  
*at Alderley Park*

*The Milton four bedroom home*

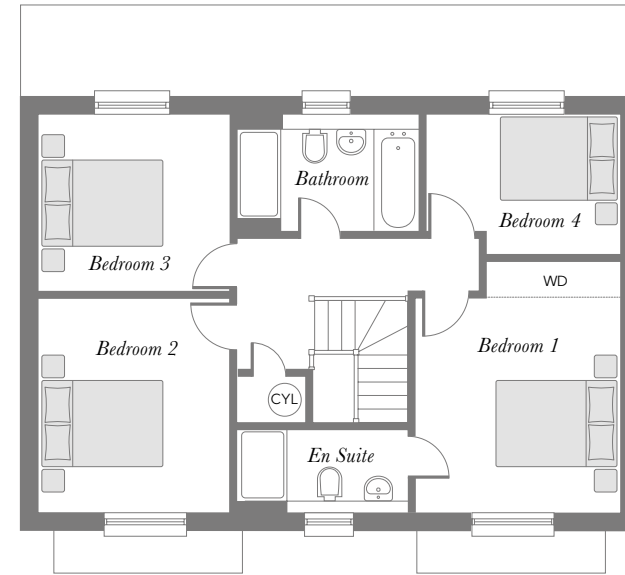


# The Milton four bedroom home



## Ground Floor

Kitchen/Dining/Family Area	9.572m	x	3.765m	31'4"	x	12'4"
			(min)			(min)
Living Room	4.136m	x	3.332m	13'6"	x	10'11"
	(excl bay)		(excl bay)			
Study	3.445m	x	2.943m	11'3"	x	9'7"
	(excl bay)		(excl bay)			
Cloakroom	1.512m	x	1.100m	4'11"	x	3'7"
Utility	1.840m	x	1.750m	6'0"	x	5'8"



## First Floor

Bedroom 1	4.135m	x	3.389m	13'6"	x	11'1"
	(max)		(max)	(max)		(max)
En Suite	2.668m	x	1.360m	8'9"	x	4'5"
	(max)		(max)	(max)		(max)
Bedroom 2	3.535m	x	3.329m	11'7"	x	10'11"
Bedroom 3	3.329m	x	2.922m	10'11"	x	9'7"
Bedroom 4	3.200m	x	2.322m	10'5"	x	7'7"
			(max)			(max)
Bathroom	2.857m	x	1.935m	9'4"	x	6'4"

B Boiler  
 CYL Hot Water Cylinder  
 RW Roof Window  
 WD Wardrobe  
 RC Range Cooker  
 d Dryer  
 w Washer  
 --- Reduced Head Height

Some items shown in this key may be subject to change, and positions could vary from those indicated on this floorplan. Please refer to Sales Advisor for details of your selected plot. Computer generated image shown overleaf. External finishes, landscaping and configuration may vary from plot to plot. Please refer to Sales Advisor for further details. All dimensions are approximate and should not be used for carpet sizes, appliance spaces, or furniture. Furniture not to scale and all positions are indicative. We operate a policy of continuous improvement and individual features such as kitchen and bathroom layouts, doors, windows, garages and elevational treatments may vary from time to time. Consequently these particulars should be treated as general guidance only and do not constitute a contract, part of a contract or a warranty. 185773/02/19. The Milton. Laura Ashley kitchen sizes of range varies, see kitchen plan for more information.