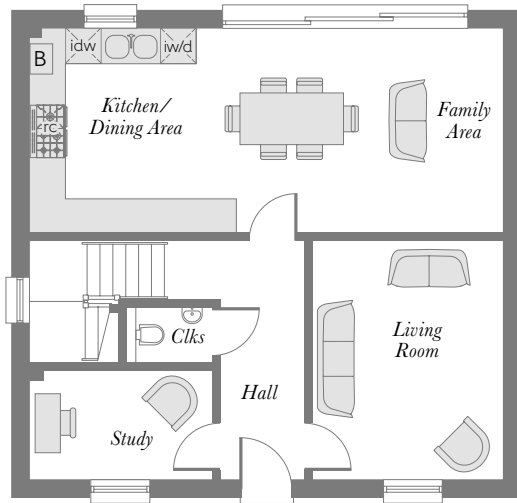


HEATHERLEY  
WOOD  
*at Alderley Park*

*The Whitebeam four bedroom home*

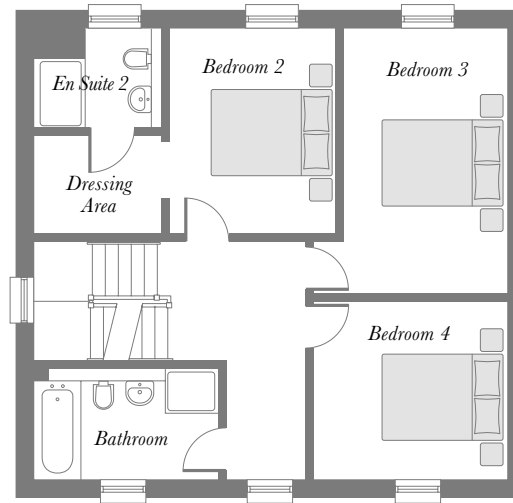


# The Whitebeam four bedroom home



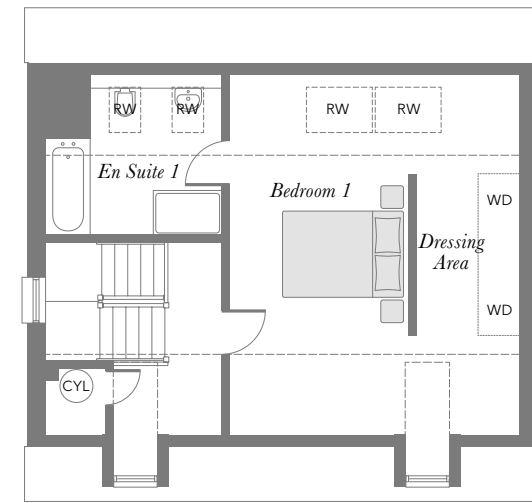
## Ground Floor

Kitchen/Family/ Dining Area	8.110m x 3.522m	26'7" x 11'6"
Living Room	4.100m x 3.248m	13'5" x 10'7"
Cloakroom	1.577m x 0.979m	5'2" x 3'2"
Study	3.113m x 1.900m	10'2" x 6'2"



## First Floor

Bedroom 2	3.560m x 2.890m	11'8" x 9'5"
Dressing Area	2.175m x 1.730m	7'1" x 5'8"
En Suite 2	2.175m x 1.700m	7'1" x 5'6"
Bathroom	3.113m x 1.850m	10'2" x 6'0"
Bedroom 3	4.580m x 2.859m	15'0" x 9'4"
Bedroom 4	3.355m x 3.100m	11'0" x 10'2"



## Second Floor

Bedroom 1	6.158m x 4.975m	20'2" x 16'3"
En Suite 1	3.042m x 2.773m	9'11" x 9'1"

B Boiler  
 CYL Hot Water Cylinder  
 RW Roof Window  
 WD Wardrobe  
 RC Range Cooker  
 iw/d Integrated Washer/Dryer  
 idw Integrated Dishwasher  
 - - - Reduced Head Height  
 Clks Cloakroom

Some items shown in this key may be subject to change, and positions could vary from those indicated on this floorplan. Please refer to Sales Advisor for details of your selected plot. Computer generated image shown overleaf. External finishes, landscaping and configuration may vary from plot to plot. Please refer to Sales Advisor for further details. All dimensions are approximate and should not be used for carpet sizes, appliance spaces, or furniture. Furniture not to scale and all positions are indicative. We operate a policy of continuous improvement and individual features such as kitchen and bathroom layouts, doors, windows, garages and elevational treatments may vary from time to time. Consequently these particulars should be treated as general guidance only and do not constitute a contract, part of a contract or a warranty. 185773/02/19. The Whitebeam. Laura Ashley kitchen sizes of range varies, see kitchen plan for more information.